



The Regency is a fully equipped and affordable park home with a traditional exterior and beautiful interior design.

Available in a large range of standard floor plans, this home has a layout to suit everyone. Option includes two bedrooms, a utility room, study, en-suite shower and/or a walk-in wardrobe.

Inside, large box bay windows to the lounge and dining area, add light and depth and with furniture included, a fully fitted kitchen with integrated appliances, a fitted bathroom and beautiful interior design, this home really does have it all!

- New detached single-storey turn-key homes
- Fully fitted kitchen with integrated appliances
- 10 Year Gold Shield Warranty
- 2 double bedrooms and 2 luxury bathrooms
- 100% part exchange offered against your home
- No chain - move straight in

YOUR BRAND NEW HOME AWAITS

Release equity from your old home
Ask one of our Sales Advisers about Part Exchange

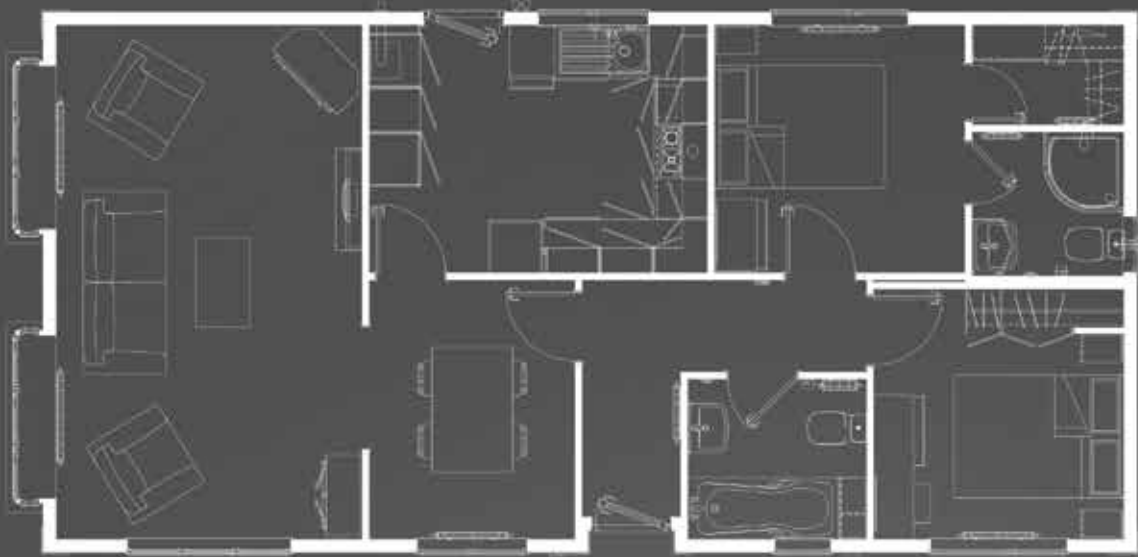


CONTACT US TODAY TO FIND OUT MORE INFORMATION OR TO ARRANGE A VIEWING

45' x 20' - 2 Double Bedrooms, 2 Bathrooms



40' x 20' - 2 Double Bedrooms, 2 Bathrooms



Affordable and traditionally styled, the Omar Regency park home is well-positioned in the marketplace, demonstrating a high quality finish usually associated with pricier homes, yet with a realistic and achievable price-tag. It is designed to appeal to a wide market, and has already proved itself as a very popular model. That's a winning combination already and Omar have now given it a stunning makeover, with a new interior design and beautiful new colour scheme of soft, warm earthy tones.

YOUR BRAND NEW HOME AWAITS

Release equity from your old home
Ask one of our Sales Advisers about Part Exchange



CONTACT US TODAY TO FIND OUT MORE INFORMATION OR TO ARRANGE A VIEWING