



Affordable, contemporary and fresh, the all-new 2019 Image park home stands out for its curb appeal and offers a perfect blend of style and practicality.

The striking exterior with its clean, contemporary lines, benefits from CanExel cladding detail to the boxed-out windows and around the recessed, feature front door which sits under a roof dormer.

Inside the accommodation comprises a central kitchen-diner, large lounge, two bedrooms (the master with dressing area and en-suite) and a family bathroom (there's also the option for a utility room and study on selected floorplans).

- **New detached single-storey turn-key homes**
- **Fully fitted kitchen with integrated appliances**
- **10 Year Gold Shield Warranty**
- **2 double bedrooms and 2 luxury bathrooms**
- **100% part exchange offered against your home**
- **No chain - move straight in**

YOUR BRAND NEW HOME AWAITS

Release equity from your old home
Ask one of our Sales Advisers about Part Exchange



PRESTHOPE GRANGE
RESIDENTIAL PARK HOMES

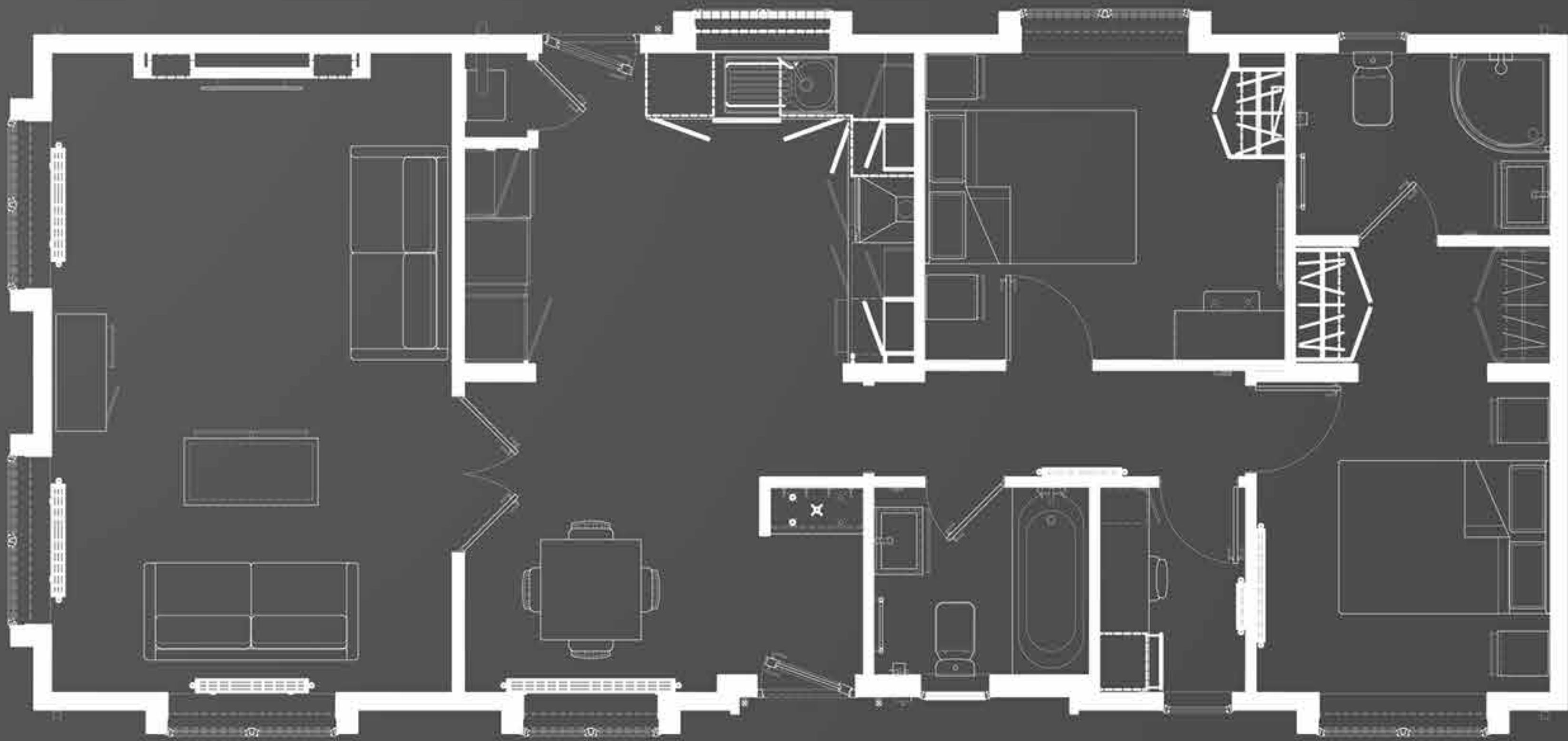


PART EXCHANGE
YOUR HOME



CONTACT US TODAY TO FIND OUT MORE INFORMATION OR TO ARRANGE A VIEWING

45' x 20' - 2 Double Bedrooms, 2 Bathrooms



40' x 20' - 2 Double Bedrooms, 2 Bathrooms



The front door opens into a semi-enclosed area where there's a practical boot seat and coat hooks, which then leads into a large kitchen-diner. The ceiling here is vaulted, which along with the simplicity of the interior design, provides a feeling of light and space. An extending dining table with chairs sits to one side of the room, and sleek contemporary kitchen units in two tones of grey with brushed steel 'T' bar handles house an array of integrated appliances; everything you need whilst providing the perfect canvas to add your own touches.

YOUR BRAND NEW HOME AWAITS

Release equity from your old home
Ask one of our Sales Advisers about Part Exchange



PRESTHOPE GRANGE
RESIDENTIAL PARK HOMES



PART EXCHANGE
YOUR HOME



CONTACT US TODAY TO FIND OUT MORE INFORMATION OR TO ARRANGE A VIEWING